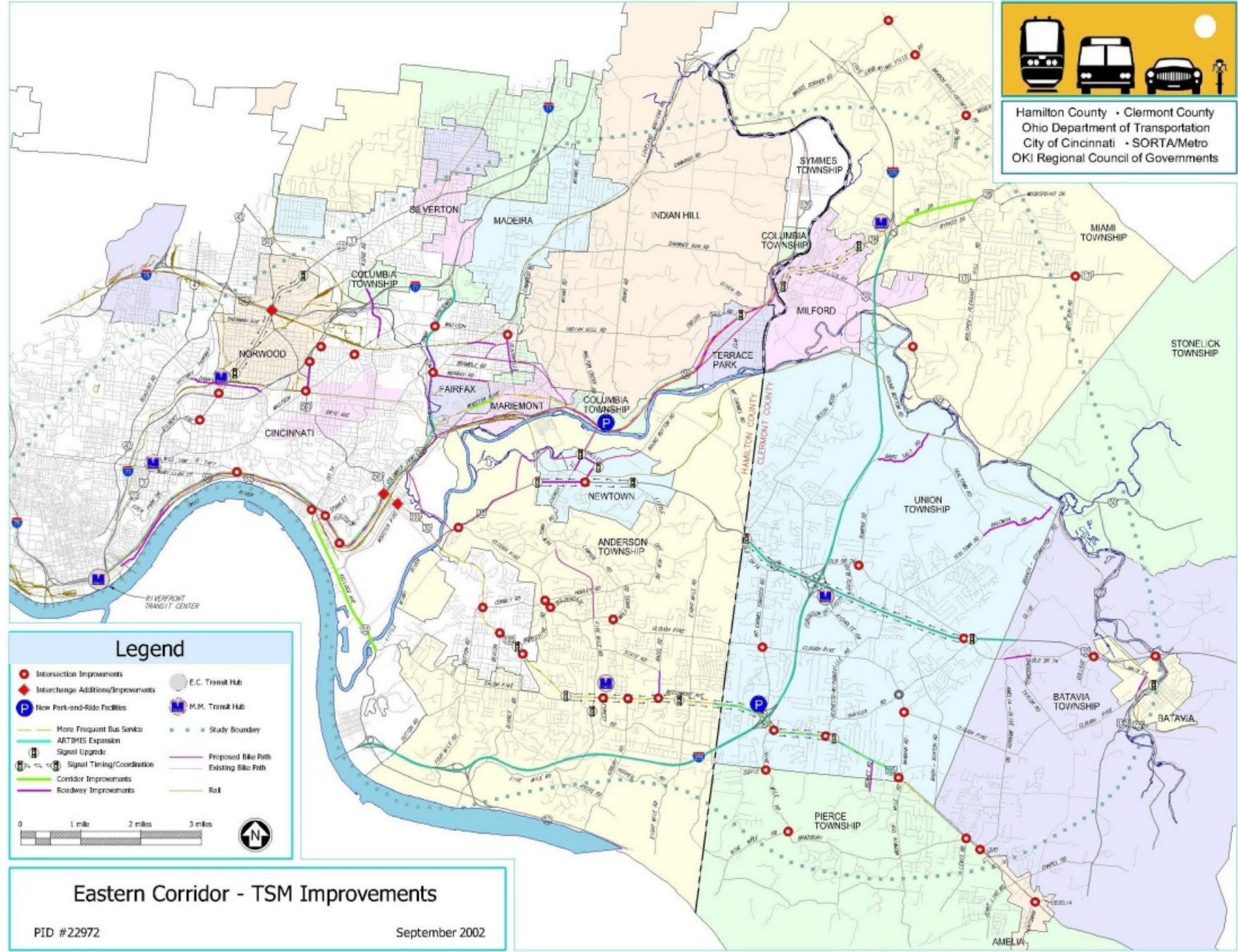




Hamilton County • Clermont County
 Ohio Department of Transportation
 City of Cincinnati • SORTA/Metro
 OKI Regional Council of Governments



Legend

- Intersection Improvements
- ◆ Interchange Additions/Improvements
- Ⓟ New Park-and-Ride Facilities
- More Frequent Bus Service
- ARTSMIS Expansion
- Ⓜ Signal Upgrades
- Ⓜ Signal Timing/Coordination
- Corridor Improvements
- Roadway Improvements
- Ⓜ E.C. Transit Hub
- Ⓜ M.M. Transit Hub
- Ⓜ Study Boundary
- Proposed Bike Path
- Existing Bike Path
- Rail



Eastern Corridor - TSM Improvements

PID #22972

September 2002